



MICRO SWITCH

FREEPORT, ILLINOIS, U.S.A.
A DIVISION OF HONEYWELL

FED. MFG. CODE 91929

SWITCH - BASIC

CATALOG LISTING

BZ-2RQ18-A2

ALH1000

BZ-2RQ18-A2
 PAGE 1 OF 1
M
 DRAWING NUMBER
 7
 ISSUE

REPLACES

RELEASE NO.

CHECK

23 AUG 05

RJ

CHECK

18 NOV '64

CSL

CHECK

18 NOV '64

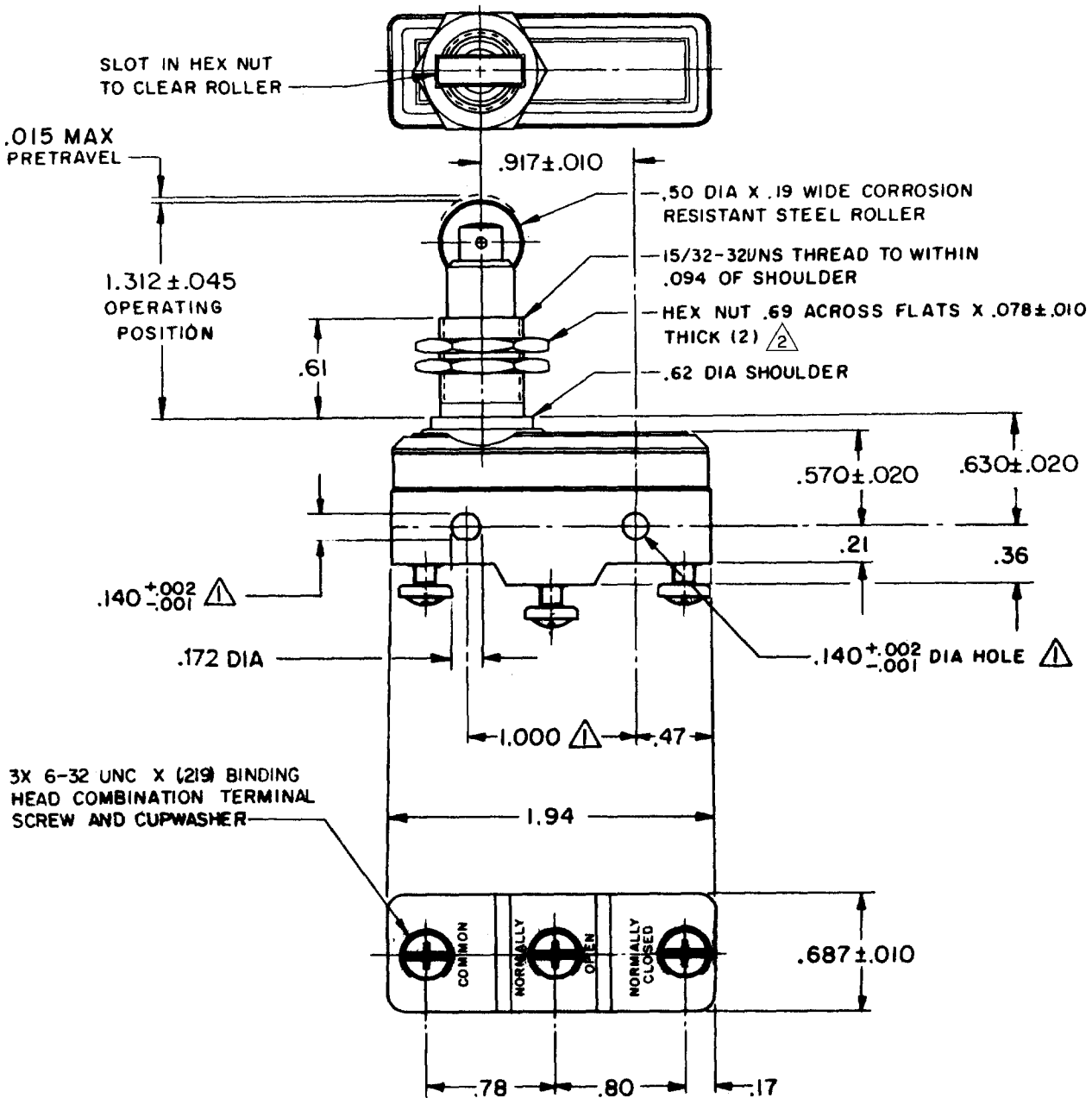
CHECK

16 NOV 64

G C H

DRAWN

FC-50376



NOTES

- \triangle 1 MOUNTING HOLES WILL ACCEPT PINS OR SCREWS OF .139 MAX DIA ON 1.000 ± .002 CENTERS
- \triangle 2 HARDWARE FURNISHED UNASSEMBLED

THIS DRAWING COVERS A PROPRIETARY ITEM AND IS THE PROPERTY OF MICRO SWITCH, A DIVISION OF HONEYWELL. THIS DRAWING IS NOT TO BE COPIED OR USED WITHOUT THE APPROVAL OF MICRO SWITCH.

CHARACTERISTICS

OPERATING FORCE ----- 9-13 OZ
 RELEASE FORCE ----- 4 OZ MIN
 DIFFERENTIAL TRAVEL --- .0004 - .0020
 OVERTRAVEL ----- .140 MIN

ELECTRICAL DATA

CONTACT ARRANGEMENT
 S P D T
 -L96- 15 A-125, 250, OR 480 VAC
 1/2 A-125 VDC; 1/4 A-250 VDC
 1/8 HP-125 VAC; 1/4 HP-250 VAC
 -L288-
 -L306-
 -L315-

EN 05 EC
 16A 250V
 T85 5E4

SCALE FULL

DO NOT SCALE PRINT

UNLESS OTHERWISE NOTED

DIMENSIONS ARE IN INCHES

TOLERANCES ARE:

ONE PLACE (.0) ± .030
 TWO PLACE (.00) ± .015
 THREE PLACE (.000) ± .005
 ANGLES ±

WEIGHT

FORMTEK